

DIN 15 710
C-3-1579007-1

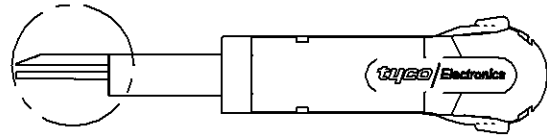
PASSNASS	ABMSS

PROJECT NO. _____ USED ON _____

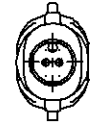
THIS DRAWING IS A CONTROLLED DOCUMENT FOR THE MANUFACTURE OF THE PRODUCT AND THE CONTROLLED DOCUMENTATION SHOULD BE CONSULTED FOR THE LATEST REVISION.

DIESES ZEICHNUNGSDOKUMENT FÜR DIE HERSTELLUNG DES PRODUKTES UND DIE KONTROLLIERTE DOKUMENTATION SOLLTE FÜR DIE NEUESTE REVISION ZURÜCKGEGRIFFEN WERDEN.

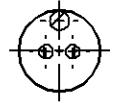
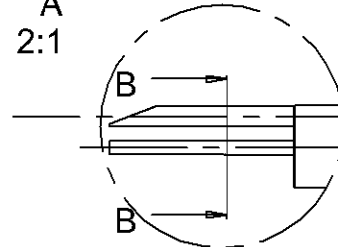
THIS DRAWING IS A CONTROLLED DOCUMENT FOR THE MANUFACTURE OF THE PRODUCT AND THE CONTROLLED DOCUMENTATION SHOULD BE CONSULTED FOR THE LATEST REVISION.



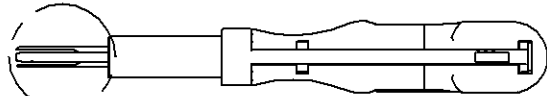
A



A
2:1

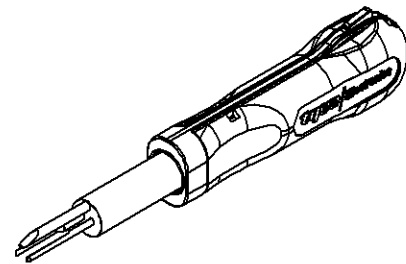
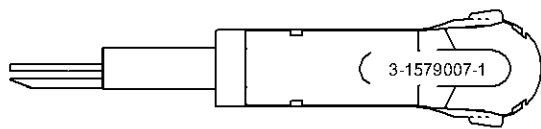
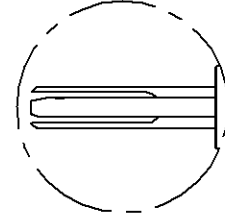


B-B
2:1



C

C
2:1



FOR CONTACTS / HOUSINGS:

SPT (in relay holder)

PREZISANSTOLERANZEN NACH DIN 7168 (Werte in mm)
1) Abweichung von DIN 7168 2) Länge des Kurzstrichs

NENNMASS-REIBE	0,5	3	6	30	120	400
BEREICH 1) B15	3	6	30	120	400	1000
LÄNGEN-MASS	±0,05	±0,08	±0,10	±0,15	±0,20	±0,30
MASS	MITTEL	±0,1	±0,2	±0,3	±0,5	±0,8
RADIEN U. FASEN	±0,2	±0,3	±1	±2	±4	±6
WINKELABMASSE 1) 2)	±1°	±1,5°	±30'	±20'	±10'	±5'

GENERAL TOLERANCES ACC. TO DIN 7168 (VALUES IN mm)
1) DEVIATING FROM DIN 7168 2) LENGTH OF SHORT ANGLE STRIKE

LOC	-	-	-	-																				
AI	-	-	-	-																				
DIST	-	-	-	-																				
<p>TEIL IN BEREICH ... MIT PRÜFSTRICH-NR. (-) VIE. GEZ., REVISION-STATUS UND LÖSUNGSSYMBOLE. GEGENWÄRTIG KEINERLEI STATUS UND VERBODENE MARKEN IN AREA ...</p> <p>PART TO BE MARKED WITH PRÜFSTRICH-NR. (-) AS SHOWN, REV. STATUS AND VERBODENE MARKEN IN AREA ...</p> <p>ÜBERFLÄCHENVERGLEICHSTABELLE</p> <table border="1"> <tr> <td>DIN 3141 R3</td> <td>▽</td> <td>▽▽</td> <td>▽▽▽</td> <td>▽▽▽▽</td> </tr> <tr> <td>Ra in µm</td> <td>6,3</td> <td>1,6</td> <td>0,4</td> <td>0,1</td> </tr> <tr> <td>DIN 3141 R3</td> <td>▽</td> <td>▽▽</td> <td>▽▽▽</td> <td>▽▽▽▽</td> </tr> <tr> <td>Ra in µm</td> <td>6,3</td> <td>1,6</td> <td>0,4</td> <td>0,1</td> </tr> </table> <p>ALLE UNKANTIGE KANTEN 0,2x45° ENTGRATEN REMOVE BURRS, BREAK SHARP EDGES 0,2x45°</p>					DIN 3141 R3	▽	▽▽	▽▽▽	▽▽▽▽	Ra in µm	6,3	1,6	0,4	0,1	DIN 3141 R3	▽	▽▽	▽▽▽	▽▽▽▽	Ra in µm	6,3	1,6	0,4	0,1
DIN 3141 R3	▽	▽▽	▽▽▽	▽▽▽▽																				
Ra in µm	6,3	1,6	0,4	0,1																				
DIN 3141 R3	▽	▽▽	▽▽▽	▽▽▽▽																				
Ra in µm	6,3	1,6	0,4	0,1																				

P	LTR	REVISION RECORD	DATE	DWN	APVD

FINISH	DWN	06.11.2006	MATERIAL	
DIMENSIONS	mm			
TOLERANCES UNLESS OTHERWISE SPECIFIED				
0 PLC	±			
1 PLC	-			
2 PLC	-			
3 PLC	-			
4 PLC	-			
ANGLER				
SURFACE TEXTURE				

CHK	m. Pearson	06.11.2006	MATERIAL		Gewicht / Weight	0,000kg			
APVD					HEAT TREAT				
NAME			<p>tyco Electronics tyco Electronics AMP GmbH D - 64625 Bensheim</p>						
EXTRACTION TOOL Entriegelungswerkzeug									
SCALE	1:1	SIZE	A3	DRAWING NO	C-3-1579007-1	SHEET	1 of 1	REV	A

D
C
B
A